

C403.2.4.7 GROUP R-1: HOTEL/MOTEL GUESTROOMS THERMOSTATS

For hotel and motel guest rooms, a minimum of one of the following control technologies shall be required in hotels/motels with over 50 guest rooms such that the space temperature would automatically setback (winter) or set up (summer) by no less than 5°F (3°C) when the occupant is not in the room:

1. Controls that are activated by the room occupant via the primary room access method - key, card, deadbolt, etc.
2. Occupancy sensor controls that are activated by the occupant's presence in the room.

Fahrenheit/Celsius Change Over

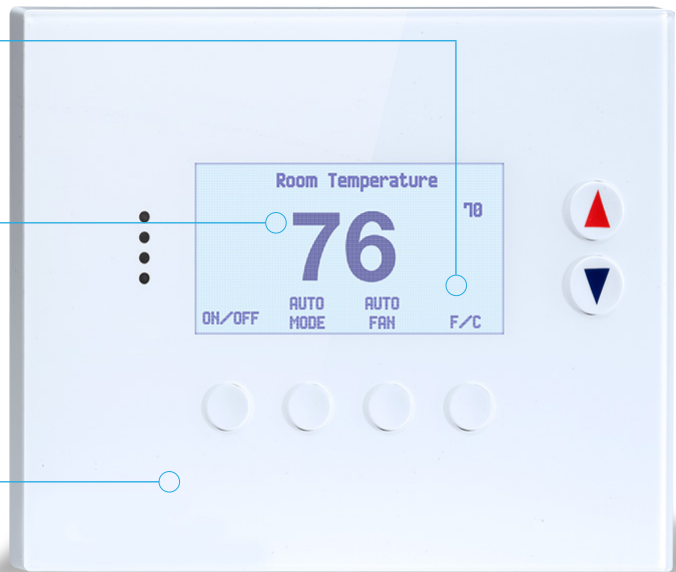
Hotel/motel guestroom thermostats include numeric setpoints in F and C.

Numeric Setpoints

Hotel/motel guestroom thermostats have setpoint stops which are accessible only to authorized personnel, such that the guestroom occupants cannot adjust the setpoint more than +/- 5F (+/- 3C).

Device Logic

Devices are commissioned with logic that allows for occupancy-based setback (keycard, heat/motion sensor) and maximum/minimum setpoint configuration.



Captive Keycard

Wall mounted device powered by a 2-year lithium battery that conserves hotel energy by disabling HVAC and lighting in unoccupied rooms.

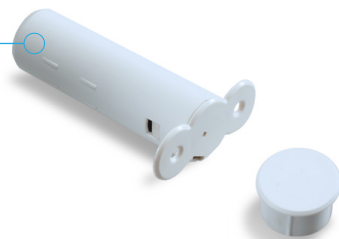
Heat/Motion Sensor

Designed to monitor guestrooms where furniture layout may block a wall-mounted detector's line of sight. Low battery signaling allows for efficient power management and prolonged battery life.



Door Contact

Battery powered with extremely small form factor and aesthetical design, the Evolve door sensor will send RF signals to associated Evolve devices within its own RF network when the main unit separates from the smaller unit.



C405.2.3.3: SPECIFIC APPLICATION CONTROLS

Hotel and motel sleeping units and guest suites shall have a master control device at the main room entry that controls all permanently installed luminaries and switched receptacles. Where a hotel/motel includes more than 50 rooms, controls shall be automatic to ensure all power to the lights and switched outlets are turned off when the occupant is not in the room.

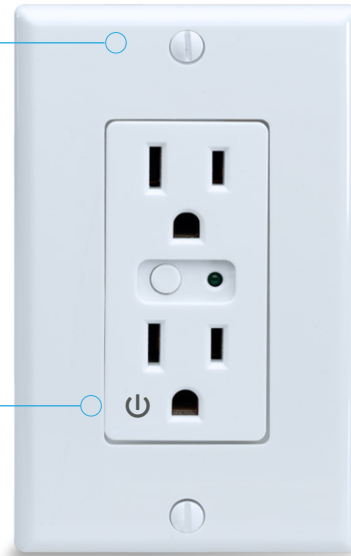
120v Receptacles

Inclusion of the Evolve Outlet allows for remote ON/OFF control of loads connected to the controlled outlet (the other outlet remains powered at all times) and is fully scene capable to ensure all switched outlets are turned off when the occupancy is not in the room.

RF Duplex Receptacles

Evolve's RF Duplex Receptacles offer wireless 1/2 controlled outlets:

1. Keycard; or
2. Heat/Motion Sensor + Door Contact



Indoor Lighting

Hotel/motel guestrooms shall have captive key card control, occupancy sensing controls, or automatic controls such that, no longer than 30 minutes after the guestroom has been vacated, lighting power is turned off.

RF Wireless Lighting Controls

Evolve offered RF Wireless Lighting Controls:

- Binary Switch (On/Off)
- Dimmer Switch
- Accessory / 3-Way Switch

Occupancy-based setback:

1. Keycard; or
2. Heat / Motion Sensor + Door Contact

